

4000 Amp/ 3 Phase Termination Cabinet

- Termination cabinets are constructed with all welded seams. Material is 12 Ga. galvanized sheet steel, conforming with ASTM A-924 & G90-U.
- Cabinets are provided with a 2-piece removable screw cover front with provisions for meter seals.
- Bottom is open with a 1 1/2" internal flange. 1/2" holes are provided for mounting.
- Aluminum busbars to accommodate 12 sets of conductors on both line and load.
- Total custom capability allows us to meet a wide range of customer needs. We can supply special sizes, shapes, holes, or cutouts.
- Termination cabinets are constructed in accordance with UL Bulletin 50 and available in NEMA type 1 & 3R.



DWG. TITLE: Power Termination Cabinet
4000A / 3 Phase Part # PTC-4

DWG. NO.: PTC-4

MATERIAL: 12 Ga. Galvanized
ASTM A924 - G90-U

FINISH: N/A

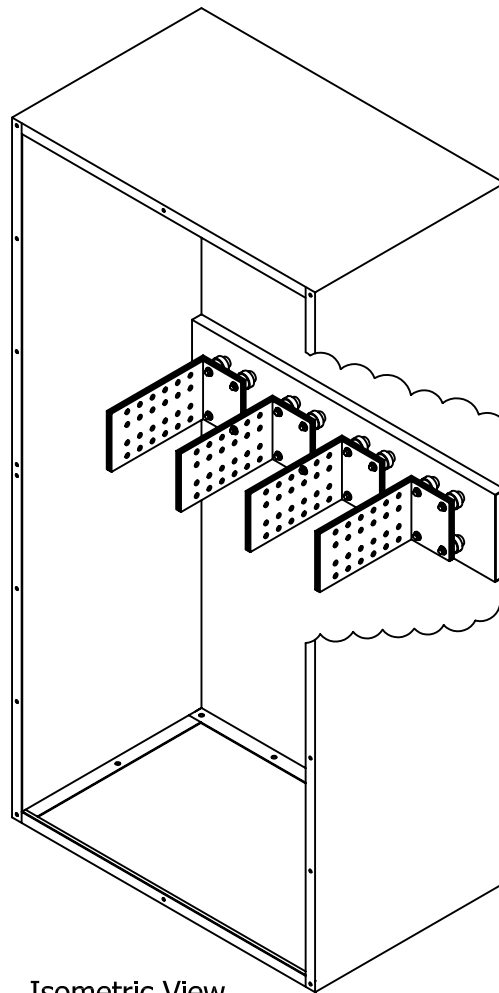
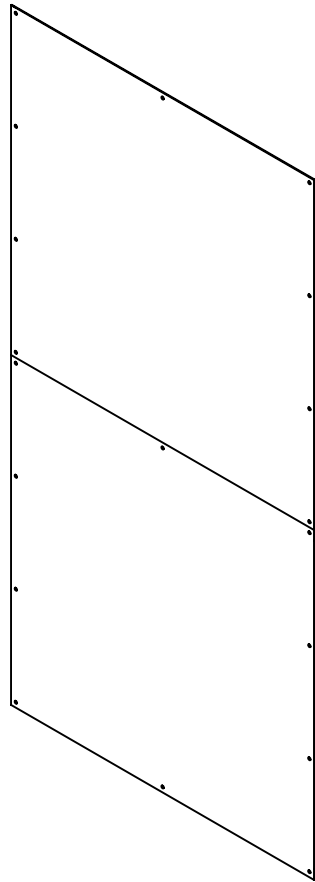
NOTICE:
THIS INFORMATION IS THE PROPERTY OF N.J. SULLIVAN CO., ANY REPRODUCTION, PUBLICATION OR DISTRIBUTION TO A THIRD PARTY IS STRICTLY FORBIDDEN UNLESS WRITTEN PERMISSIONS ARE GIVEN BY AN AUTHORIZED AGENT OF: N.J. SULLIVAN CO., INC.

DFTG.:	CD	DATE:	8/15/11
CHKR.:		DATE:	
REV.:		DATE:	
REV.:		DATE:	
REV.:		DATE:	

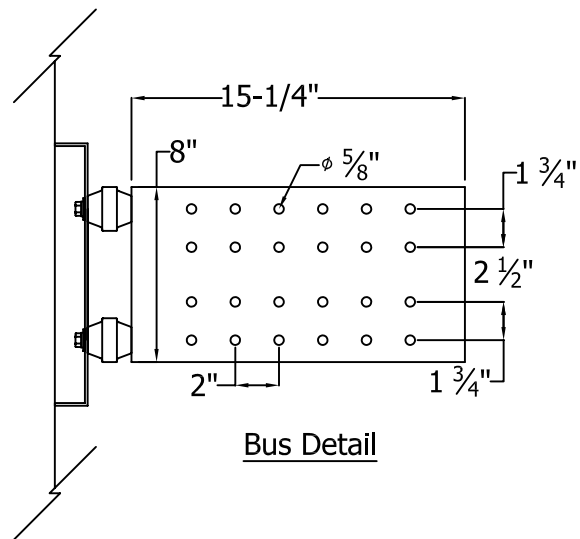
N.J.
SULLIVAN Co.

INCORPORATED
P.O. BOX 438, STERLING, VIRGINIA 20167
METAL FABRICATION

Phone: (703)-464-5944 Fax: (703)-464-5992
www.njsullivan.com



Isometric View



Bus Detail

DWG. TITLE: 4000A Termination Cabinet
Isometric Detail

DWG. NO.: PTC-4A

MATERIAL: 12 Ga. Galvanized
ASTM A924 - G90-U

FINISH: N/A

NOTICE:
THIS INFORMATION IS THE PROPERTY OF N.J. SULLIVAN CO., ANY REPRODUCTION, PUBLICATION OR DISTRIBUTION TO A THIRD PARTY IS STRICTLY FORBIDDEN UNLESS WRITTEN PERMISSIONS ARE GIVEN BY AN AUTHORIZED AGENT OF:
N.J. SULLIVAN CO., INC.

DFTG.:	CD	DATE:	08/15/11
CHKR.:		DATE:	
REV.:		DATE:	
REV.:		DATE:	
REV.:		DATE:	

N.J.
SULLIVAN Co.

INCORPORATED
P.O. BOX 438, STERLING, VIRGINIA 20167
METAL FABRICATION

Phone: (703)-464-5944 Fax: (703)-464-5992
www.njsullivan.com

Power Termination Cabinets Notes

1 - CABINET FABRICATION IS A WELDED CONSTRUCTION IN ACCORDANCE WITH NEMA TYPE 3R SPECIFICATIONS. MATERIAL IS 14 GAUGE (PART NO. PTC1) AND 12 GAUGE (PART NOS. PTC-2, 3 & 4) G-90U GRADE GALVANIZED STEEL IN ACCORDANCE WITH ASTM A924 - G90-U. ALL JOINTS AND SEAMS ARE WELDED THEN REFINISHED WITH GALVANIC COATING TO PRESERVE FINISH.

2 - BUSS BAR MOUNTING CHANNELS ARE FABRICATED FROM 12 GAUGE G-90U GRADE GALVANIZED STEEL IN ACCORDANCE WITH ASTM A924.

3 - BUSS BARS ARE FABRICATED FROM ALUMINUM ALLOY BAR STOCK, 1/4" THICK, 6101-T61 IN ACORDANCE WITH ASTM B317. MINIMUM ELECTRICAL CONDUCTIVITY AT 20° C % IACS IS 57%. BUSS BARS ARE PUNCHED TO ACCOMODATE STANDARD 2 HOLE HIGH-PRESS LUGS.

4 - ALL STANDOFF INSULATORS ARE MOLDED OF UL RECOGNIZED FLAME RESISTANT FIBERGLASS-REINFORCED THERMOSET POLYESTER MOLDING COMPOUND WITH THREADED INSERTS AT EACH END. UL RECOGNIZED ACCORDING TO UL STANDARD FOR SAFETY 891. VOLTAGE RATING FOR STANDOFFS USED ON PART NOS. PTC-1, 2 & 3 600V; PART NO. PTC-4, 2300V.

5 - GRADE 5 PLATED STEEL HARDWARE FOR LUG CONNECTIONS IS PROVIDED.

6 - ALTERNATE CONFIGURATIONS OF CABINETS, CHANNELS, AND BUSS BARS MAY BE PROVIDED TO MEET YOUR REQUIREMENTS UPON REQUEST.

7 - ALL POWER TERMINATION CABINETS ARE UL LABELED.

PART NUMBER	USAGE	AMPERAGE RATING	CONDUCTORS PER PHASE	CABINET DIMENSIONS		
				HEIGHT	WIDTH	DEPTH
PTC-1	INDOOR/ OUTDOOR	0 - 400	4- MAX	36"	30"	13"
PTC-2	INDOOR/ OUTDOOR	401 - 1200	4- MAX	48"	36"	14"
PTC-3	INDOOR/ OUTDOOR	1201 - 3000	6- MAX	60"	42"	19"
PTC-4	INDOOR/ OUTDOOR	3000-4000	12- MAX	91.5"	48"	30"



DWG. TITLE: Power Termination Cabinet PTC1 - PTC4
Fabrication & Material Specifications

DWG. NO.: PTC-01 Specs

MATERIAL: Specifications

FINISH:

NOTICE:
THIS INFORMATION IS THE PROPERTY OF N.J. SULLIVAN CO., ANY REPRODUCTION, PUBLICATION OR DISTRIBUTION TO A THIRD PARTY IS STRICTLY FORBIDDEN UNLESS WRITTEN PERMISSIONS ARE GIVEN BY AN AUTHORIZED AGENT OF:
N.J. SULLIVAN CO., INC.

DFTG.:	CD	DATE:	8/15/11
CHKR.:		DATE:	
REV.:		DATE:	
REV.:		DATE:	
REV.:		DATE:	

N.J.
SULLIVAN Co.

INCORPORATED
P.O. BOX 438, STERLING, VIRGINIA 20167
METAL FABRICATION
Phone: (703)-464-5944 Fax: (703)-464-5992
www.njsullivan.com