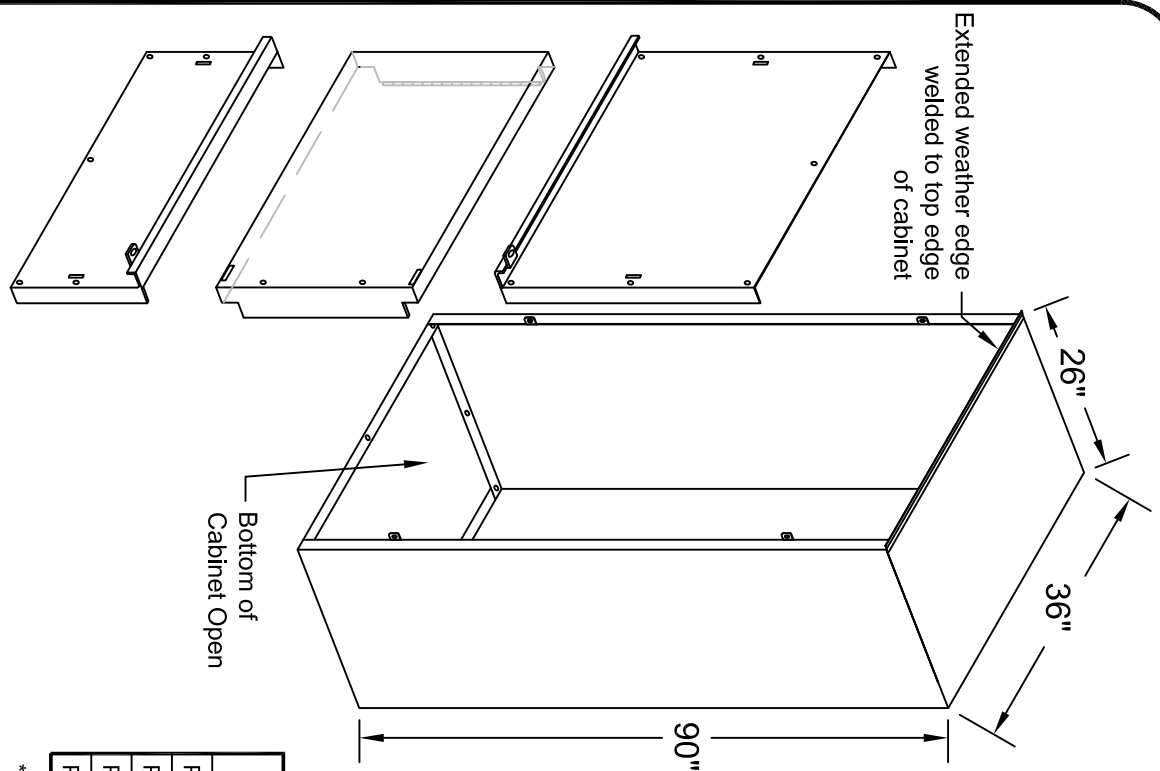


**Pre-Approved PHICT303 Metering Busbar
Construction / 2001-3000 Amp**

PHICT303 3-Phase Metering C/T Cabinet / 2001-3000Amp / NEMA 3R

- o C/T cabinets are constructed with all welded seams. Material is 12Ga. galvanealed sheet steel, conforming with ASTM A-653 and Powder Coat, ANSI 61.
- o Busbars are fabricated from Silver Plated Copper and aluminum alloy. (Ref. drawing # PHICT-303-3)
- o Busbar supports are molded of UL recognized flame resistant fiber glass reinforced compound.
- o Cabinets are provided with gasketed removable access panels top and bottom. Mid-section has hinged, gasketed door for access to C/T's. Panels and door are supplied with utility seal tabs.
- o PH C/T cabinets are constructed in accordance with UL and NEMA 3R specifications & PH drawings 7-5-0606 & 7-5-0695.




Optional kit available, kit provides equal load landings as line side landings

PHICT Part #	AMPERAGE RATING	ENCLOSURE				BUSSING				NO. LANDINGS	
		W	H	D	CT THRU BAR	LINE/LOAD	NEUTRAL	LINE	LOAD		
PHICT153	801-1500	36"	90"	19"	CU-(2) 1/4"x 4"	AL-(2) 1/4"x 4"	AL-(1) 1/4"x 4"	8	4*		
PHICT203	1501-2000	36"	90"	26"	CU-(3) 1/4"x 4"	AL-(3) 1/4"x 4"	AL-(2) 1/4"x 4"	14	14		
PHICT303	2001-3000	36"	90"	26"	CU-(4) 1/4"x 4"	AL-(6) 1/4"x 4"	AL-(2) 1/4"x 4"	14	14		
PHICT403	3001-4000	48"	90"	26"	CU-(4) 1/4"x 5"	AL-(6) 1/4"x 6"	AL-(2) 1/4"x 4"	14	14		

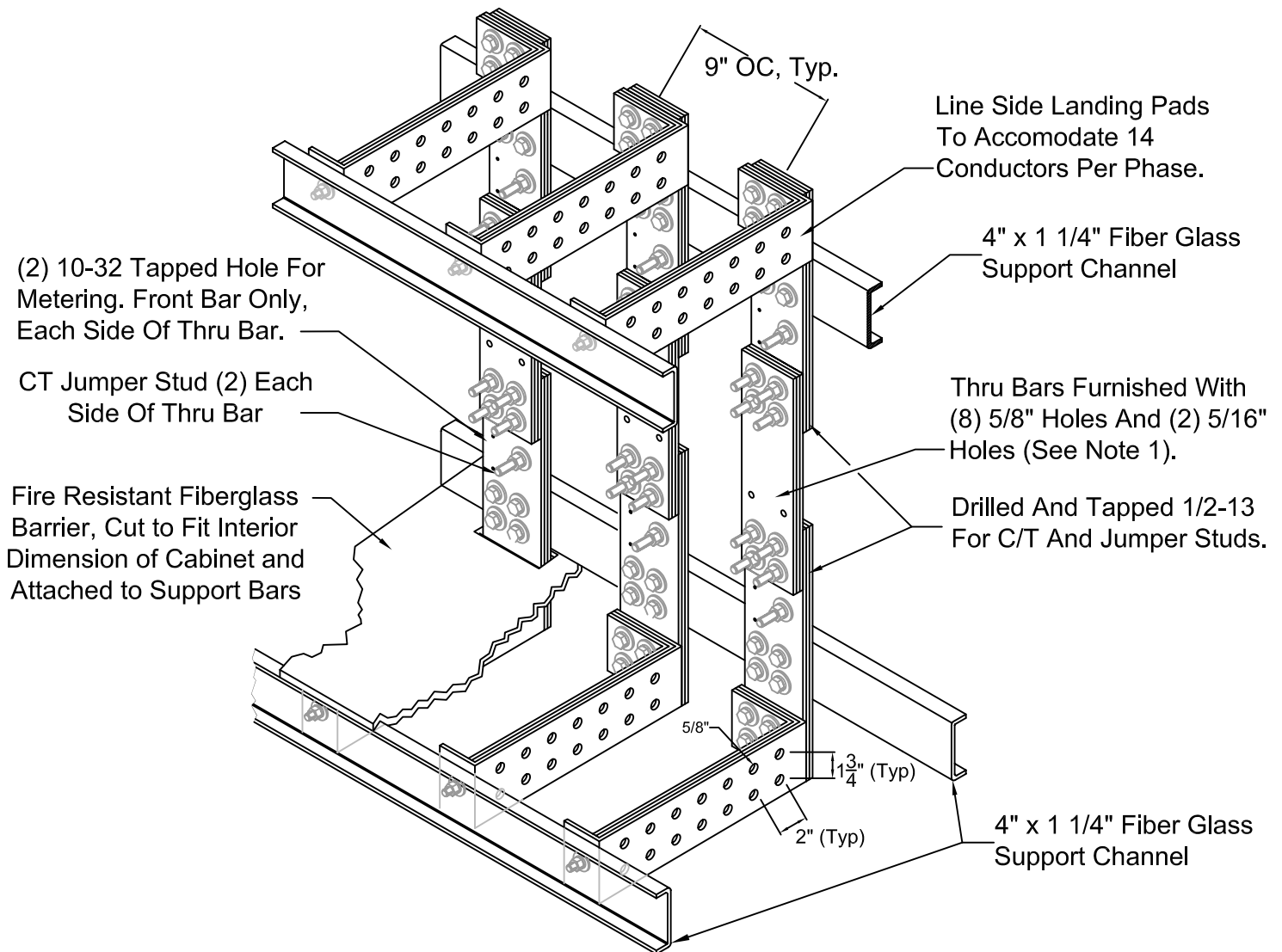
DWG. TITLE:	3-Phase Metering CT Cabinet
DWG. NO.:	NEMA 3R / 3000 Amp
MATERIAL:	PHICT-303-1
FINISH:	ASTM A653 Galvanealed Painted Gray

NOTICE:	
THIS INFORMATION IS THE PROPERTY OF N.J. SULLIVAN CO., ANY REPRODUCTION, PUBLICATION OR DISTRIBUTION TO A THIRD PARTY IS STRICTLY FORBIDDEN UNLESS WRITTEN PERMISSIONS ARE GIVEN BY AN AUTHORIZED AGENT OF: N.J. SULLIVAN CO., INC.	
DFTG.:	CD
CHKR.:	DATE: 8/16/11
REV.:	DATE:
REV.:	DATE:
REV.:	DATE:



SULLIVAN Co.
 INCORPORATED
 P.O. BOX 438, STERLING, VIRGINIA 20167
 METAL FABRICATION
 Phone: (703)-464-5944 Fax: (703)-464-5992
 www.njsullivan.com

**Pre-Approved PHICT303 Metering Busbar
Construction / 2001-3000 Amp**



Notes:

1. **Bussing built to UL 1773 & UL 891.**
2. **Unless otherwise noted, all hardware to be stainless steel.**
3. **Line-Load & Neutral bars furnished as 1/4" thick, 6101-T61 aluminum alloy per ASTM B317.**
CT thru bars are to be 1/4" thick, silver plated copper bar.
4. **1/4" GPO-3 Fiberglass barrier mounted above 'line' landings.**

* Drawing for reference only, see chart on sheet 301-1 for proper bar & landing configurations.

DWG. TITLE:	PHI Metering Busbar Construction / 3000 Amp
DWG. NO.:	PHICT-303-3
MATERIAL:	As Noted
FINISH:	N/A

NOTICE: THIS INFORMATION IS THE PROPERTY OF N.J. SULLIVAN CO., ANY REPRODUCTION, PUBLICATION OR DISTRIBUTION TO A THIRD PARTY IS STRICTLY FORBIDDEN UNLESS WRITTEN PERMISSIONS ARE GIVEN BY AN AUTHORIZED AGENT OF: N.J. SULLIVAN CO., INC.		
DFTG.:	CD	DATE: 8/16/11
CHKR.:		DATE:
REV.:		DATE:
REV.:		DATE:
REV.:		DATE:


SULLIVAN Co.
 INCORPORATED
 P.O. BOX 438, STERLING, VIRGINIA 20167
 METAL FABRICATION
 Phone: (703)-464-5944 Fax: (703)-464-5992
www.njsullivan.com