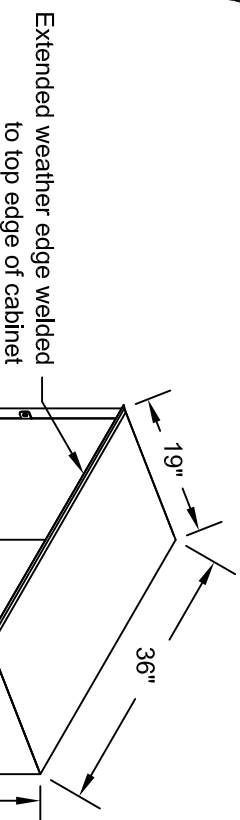


# Pre-Approved PHICT153 Metering Busbar Construction / 801-1500 Amp



## **PHICT153 3-Phase Metering C/T Cabinet / 801-1500Amp / NEMA 3R**

- C/T cabinets are constructed with all welded seams. Material is 12Ga. galvanealed sheet steel, conforming with ASTM A-653 and Powder Coat, ANSI 61.
- Busbars are fabricated from Silver Plated Copper and aluminum alloy. (Ref. drawing # PHICT-153-3)
- Busbar supports are molded of UL recognized flame resistant fiber glass reinforced compound.
- Cabinets are provided with gasketed removable access panels top and bottom. Mid-section has hinged, gasketed door for access to C/T's. Panels and door are supplied with utility seal tabs.
- PHI C/T cabinets are constructed in accordance with UL and NEMA 3R specifications & PHI drawings 7-5-0606 & 7-5-0695.

PHICT Part #	AMPERAGE RATING	ENCLOSURE			BUSING			NO. LANDINGS	
		W	H	D	CT THRU BAR	LINE/LOAD	NEUTRAL	LINE	LOAD
PHICT153	801-1500	36"	90"	19"	CU- (2) 1/4"x 4"	AL- (2) 1/4"x 4"	AL- (1) 1/4"x 4"	8	4*
PHICT203	1501-2000	36"	90"	26"	CU- (3) 1/4"x 4"	AL- (3) 1/4"x 4"	AL- (2) 1/4"x 4"	14	14
PHICT303	2001-3000	36"	90"	26"	CU- (4) 1/4"x 4"	AL- (6) 1/4"x 4"	AL- (2) 1/4"x 4"	14	14
PHICT403	3001-4000	48"	90"	26"	CU- (4) 1/4"x 5"	AL- (6) 1/4"x 6"	AL- (2) 1/4"x 4"	14	14

\*Optional kit available, kit provides equal load landings as line side landings\*

DWG. TITLE: 3-Phase Metering CT Cabinet

NEMA 3R / 1500 Amp

DWG. NO.: PHICT-153-1

MATERIAL: ASTM A653 Galvanealed

FINISH: Painted Gray

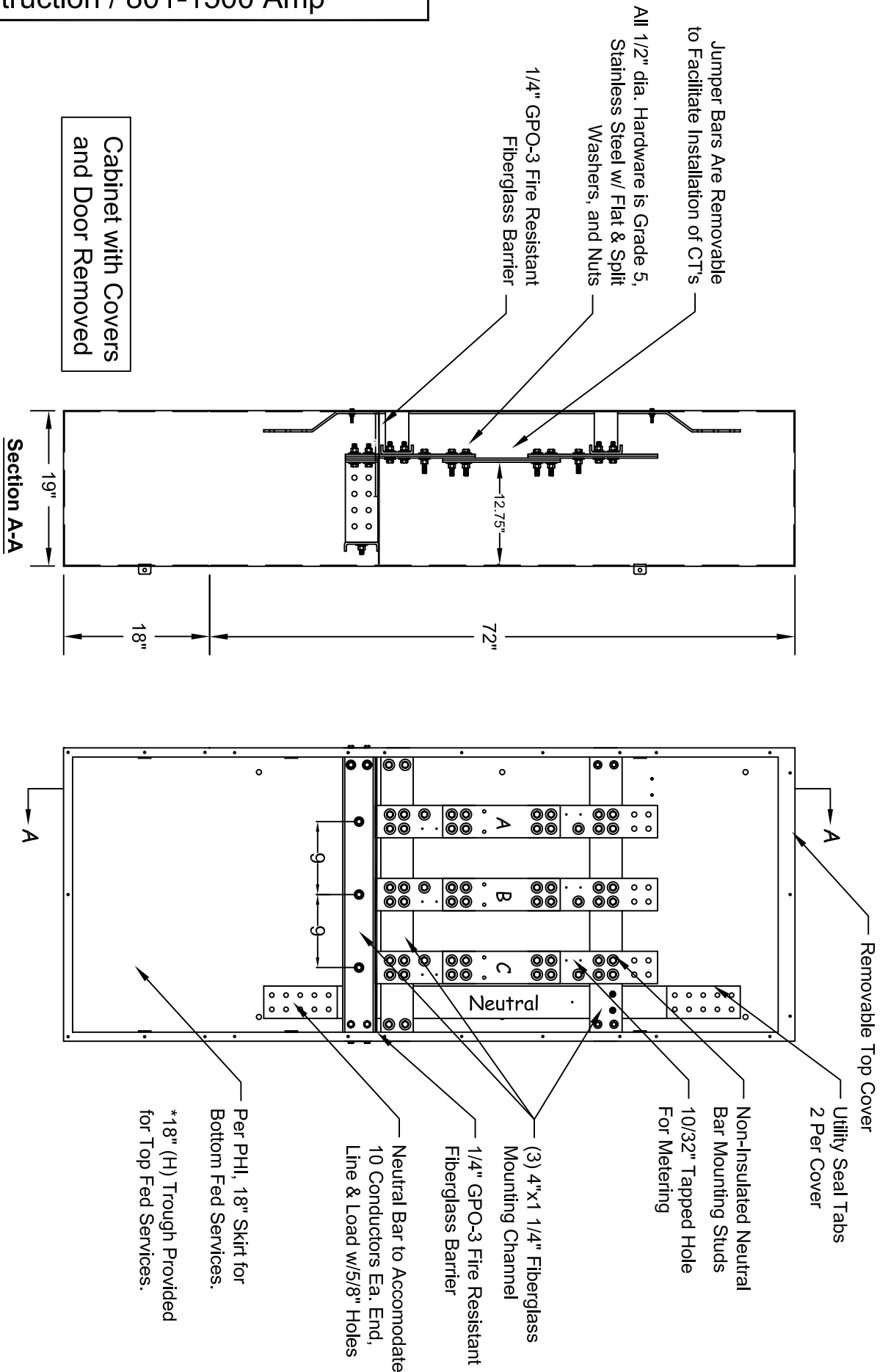
NOTICE: THIS INFORMATION IS THE PROPERTY OF N.J. SULLIVAN CO., ANY REPRODUCTION, PUBLICATION OR DISTRIBUTION TO A THIRD PARTY IS STRICTLY FORBIDDEN UNLESS PREVIOUSLY IN WRITING BY AN AUTHORIZED AGENT OF N.J. SULLIVAN CO., INC.

DWG. NO.: CD DATE: 8/16/11  
CHKD.: DATE:  
REV.: DATE:  
REV.: DATE:

**N.J. SULLIVAN CO.**

INCORPORATED  
P.O. BOX 438, STERLING, VIRGINIA 20167  
METAL FABRICATION  
Phone: (703)-464-5944 Fax: (703)-464-5992  
www.njsullivan.com

# Pre-Approved PHICT153 Metering Busbar Construction / 801-1500 Amp



DWG. TITLE: 3-Phase Metering CT Cabinet

NEMA 1 / 1500 Amp

DWG. NO.: PHICT-153-2

MATERIAL: ASTM A653 Galvanealed

FINISH: Painted Gray

NOTICE: THIS INFORMATION IS THE PROPERTY OF N.J. SULLIVAN CO. ANY REPRODUCTION, PUBLICATION OR DISTRIBUTION TO A THIRD PARTY IS STRICTLY FORBIDDEN UNLESS WRITTEN PERMISSIONS ARE GIVEN BY AN AUTHORIZED AGENT OF:  
N.J. SULLIVAN CO., INC.

DATE: 8/16/11

CHKR.: DATE:

REV.: DATE:

REV.: DATE:

**N.J. SULLIVAN Co.**

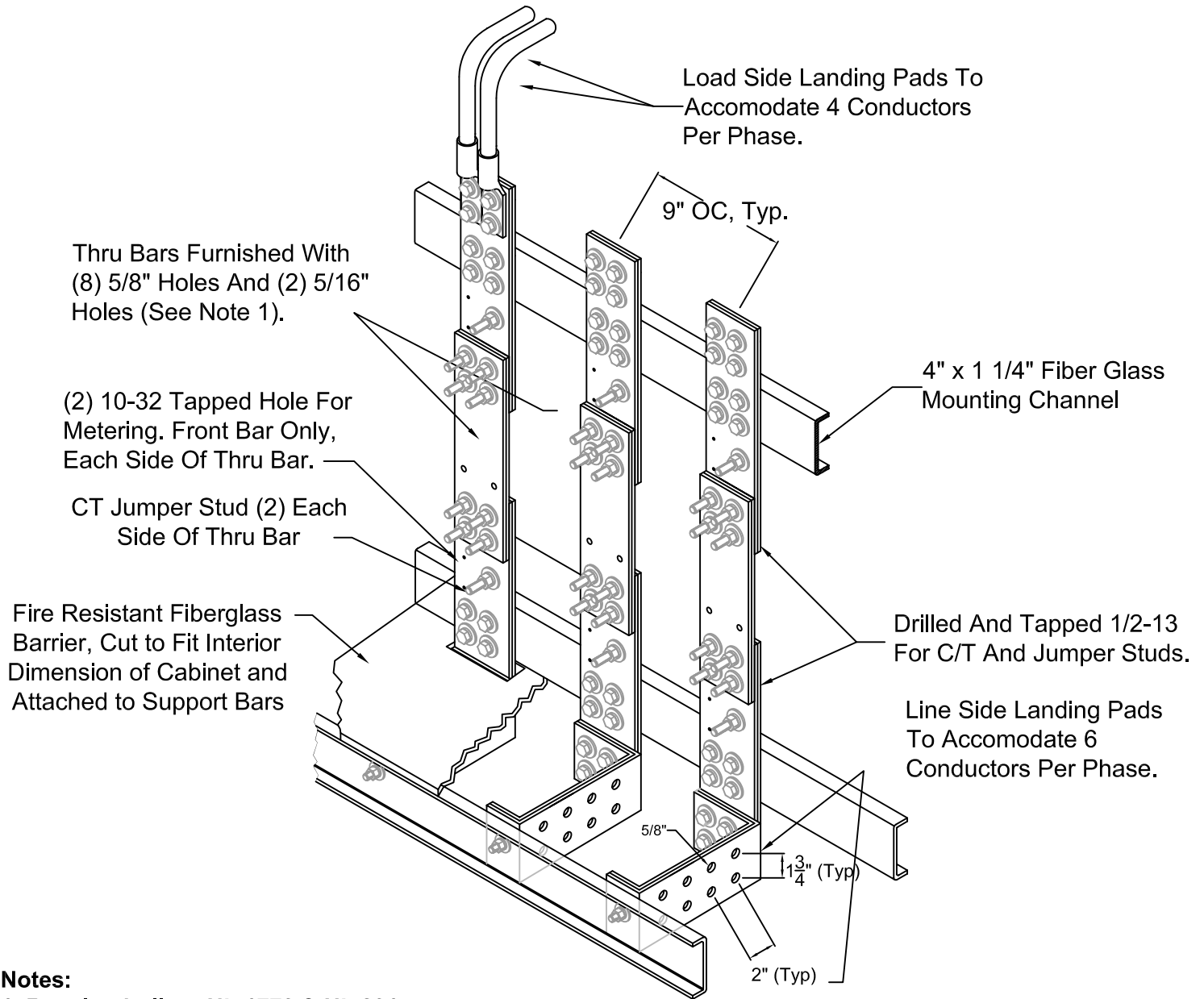
INCORPORATED

P.O. BOX 438, STERLING, VIRGINIA 20167

METAL FABRICATION

Phone: (703)-464-5944 Fax: (703)-464-5992  
www.njsullivan.com

# Pre-Approved PHICT153 Metering Busbar Construction / 801-1500 Amp



## Notes:

1. Bussing built to UL 1773 & UL 891.
2. Unless otherwise noted, all hardware to be stainless steel.
3. Line-Load & Neutral bars furnished as 1/4" thick, 6101-T61 aluminum alloy per ASTM B317.  
CT thru bars are to be 1/4" thick, silver plated copper bar.
4. 1/4" GPO-3 Fiberglass barrier mounted above 'line' landings.
5. Optional landing kit available, kit provides equal load landings as line side landings.

DWG. TITLE: PHI Metering Busbar  
Construction / 801-1500 Amp

DWG. NO.: PHICT-153-3

MATERIAL: As Noted

FINISH: N/A

NOTICE:  
THIS INFORMATION IS THE PROPERTY OF N.J. SULLIVAN CO., ANY REPRODUCTION, PUBLICATION OR DISTRIBUTION TO A THIRD PARTY IS STRICTLY FORBIDDEN UNLESS WRITTEN PERMISSIONS ARE GIVEN BY AN AUTHORIZED AGENT OF:  
N.J. SULLIVAN CO., INC.

DFTG.:	CD	DATE:	8/16/11
CHKR.:		DATE:	
REV.:		DATE:	
REV.:		DATE:	
REV.:		DATE:	

**N.J.**  
**SULLIVAN Co.**

INCORPORATED  
P.O. BOX 438, STERLING, VIRGINIA 20167  
METAL FABRICATION

Phone: (703)-464-5944 Fax: (703)-464-5992  
www.njsullivan.com