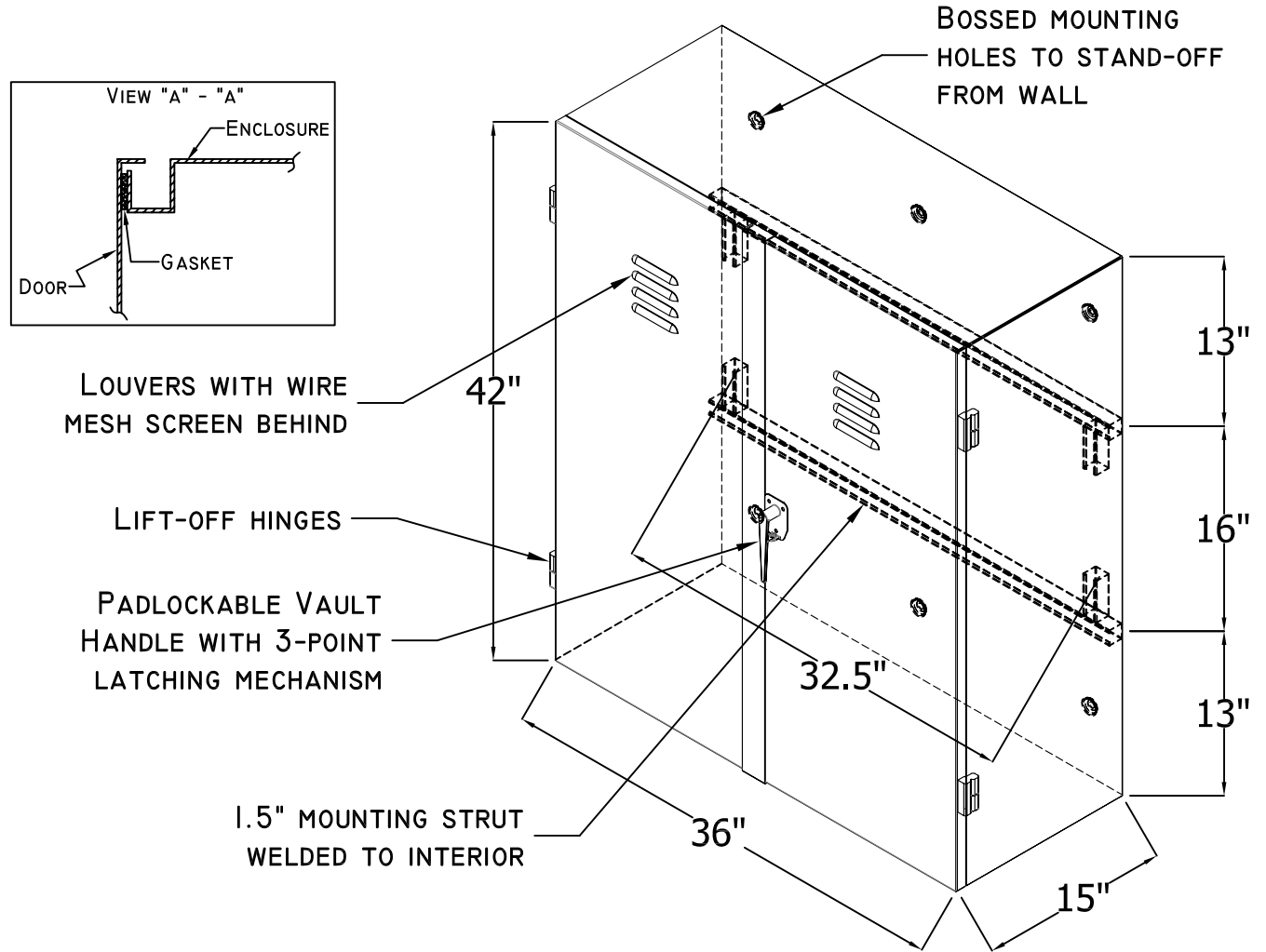


Technical Specification



NEMA 3R BGE Approved 3000 Amp CT Cabinet

- ❑ BGE CT cabinets are constructed with 10 gauge aluminum alloy 5052, conforming with ASTM B-209.
- ❑ Double doors are provided with lift-off hinges and louvers. Wire mesh screen included behind louvers. A 3-point latching mechanism is supplied with a padlockable handle.
- ❑ Cabinet has bossed mounting holes, to stand-off from wall, and interior mounting strut.
- ❑ BGE CT cabinets are constructed in accordance with UL bulletin #50 and NEMA 3R specifications, and BGE drawing #3PH3000.

DWG. TITLE: 3000 AMP BGE CT CABINET
PART# BGECT30

DWG. NO.: P10118

MATERIAL: ASTM B209 ALUMINUM ALLOY 5052

FINISH: NONE

NOTICE:
THIS INFORMATION IS THE PROPERTY OF N.J. SULLIVAN CO., ANY REPRODUCTION, PUBLICATION OR DISTRIBUTION TO A THIRD PARTY IS STRICTLY FORBIDDEN UNLESS WRITTEN PERMISSIONS ARE GIVEN BY AN AUTHORIZED AGENT OF:
N.J. SULLIVAN CO., INC.

DFTG.:	CD	DATE:	09/18/12
CHKR.:		DATE:	
REV.:		DATE:	
REV.:		DATE:	
REV.:		DATE:	

N.J.
SULLIVAN Co.

INCORPORATED
P.O. BOX 438, STERLING, VIRGINIA 20167
METAL FABRICATION

Phone: (703)-464-5944 Fax: (703)-464-5992
www.njsullivan.com