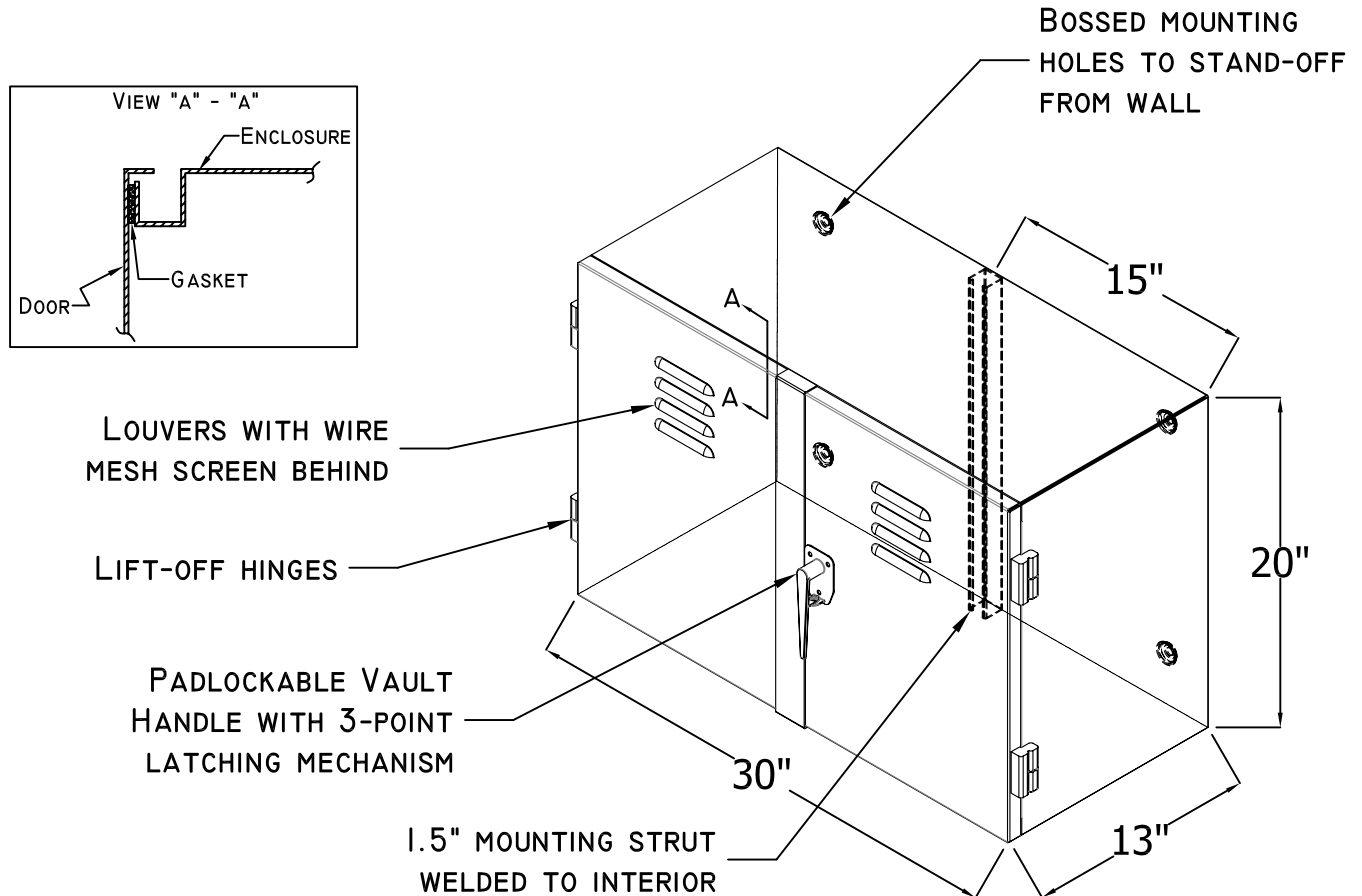


Technical Specification



NEMA 3R BGE Approved 400 Amp CT Cabinet

- ❑ BGE CT cabinets are constructed with all welded seams. Material is 14 gauge galvanized sheet steel conforming with ASTM A-653, and powder coated ANSI 61 gray.
- ❑ Double doors are provided with lift-off hinges and louvers. Wire mesh screen included behind louvers. A 3-point latching mechanism is supplied with a padlockable handle.
- ❑ Cabinet has bossed mounting holes, to stand-off from wall, and interior mounting strut.
- ❑ BGE CT cabinets are constructed in accordance with UL bulletin #50 and NEMA 3R specifications, and BGE drawing #1PH400.

DWG. TITLE: 400 AMP BGE CT CABINET
PART# BGECT4

DWG. NO.: P10116

MATERIAL: ASTM A653 GALVANNEALED

FINISH: POWDER COATED ANSI 61 GRAY

NOTICE:
THIS INFORMATION IS THE PROPERTY OF N.J. SULLIVAN CO., ANY REPRODUCTION, PUBLICATION OR DISTRIBUTION TO A THIRD PARTY IS STRICTLY FORBIDDEN UNLESS WRITTEN PERMISSIONS ARE GIVEN BY AN AUTHORIZED AGENT OF:
N.J. SULLIVAN CO., INC.

DFTG.:	CD	DATE:	09/17/12
CHKR.:		DATE:	
REV.:		DATE:	
REV.:		DATE:	
REV.:		DATE:	

N.J.
SULLIVAN Co.

INCORPORATED
P.O. BOX 438, STERLING, VIRGINIA 20167
METAL FABRICATION
Phone: (703)-464-5944 Fax: (703)-464-5992
www.njsullivan.com