

NOTES FOR TOP FEED BOLTSWITCHES:

- 1. Applications:** Particularly recommended for use in service entrance switch gear, and/or where there may be high available fault current. All Boltswitches are designed to use class 'L' fuses (fuses are not supplied).
- 2. Features:** 200,000 ampere fault current ratings; bolted pressure contacts; load break design; quick-make / quick-break operators; visible contacts; silver plated copper current carrying parts; grid type arc chutes; interpole barriers; terminals designed for lugs or busbars; provisions for up to four padlocks.
- 3. All 800 - 4000 Ampere Switches:** Have been tested in accordance with UL-977 and are UL listed as 'fused power circuit devices' under file number E44498.
- 4. Series VL & SL:** For the following; Shunt Trip Operator, add suffix '-ST' to the end of part number, same applies to; Motorized Manual Operator, add suffix '-MM' ; Motorized Shunt Trip Operator, add suffix '-MST'. (Example: VL4612N-ST)
- 5. Cabinet Design:** Cabinets are designed to meet the requirements of Underwriters Laboratories, (UL) #50 and #508. Canadian Standards Association C22.2 No. 94 and the National Electrical Manufacturers Association (NEMA) Type 1, Indoor Use, (Enclosures intended for indoor use, primarily to provide a degree of protection against contact with the enclosed equipment or locations where unusual service conditions do not exist); and NEMA Type 3, Outdoor Use, (Enclosures intended for outdoor use, primarily to provide protection against windblown dust, rain and sleet, and undamaged by the formation of ice on the enclosure).
- 6. Cabinet Layout:** Cabinets can be custom furnished with any type of cutout / knockout that may be required; i.e. trough, wireways, conduit etc. per customers request.

PART NUMBER	AMPERAGE RATING	INTEGRAL GROUND FAULT PROTECTION	BOLTSWITCH PART NUMBER	INDOORS / OUTDOORS
BPS8IT	800	NO	VL467N	INDOORS
BPS83T	800	NO	VL467N	OUTDOORS
BPSI2IT	1200	NO	VL468N	INDOORS
BPSI23T	1200	NO	VL468N	OUTDOORS
BPSI2ITG	1200	YES	VL368G6	INDOORS
BPSI23TG	1200	YES	VL368G6	OUTDOORS
BPSI6IT	1600	NO	VL469N	INDOORS
BPSI63T	1600	NO	VL469N	OUTDOORS
BPSI6ITG	1600	YES	VL369G6	INDOORS
BPSI63TG	1600	YES	VL369G6	OUTDOORS
BPS20IT	2000	NO	VL4610N	INDOORS
BPS203T	2000	NO	VL4610N	OUTDOORS
BPS20ITG	2000	YES	VL3610G6	INDOORS
BPS203TG	2000	YES	VL3610G6	OUTDOORS
BPS25IT	2500	NO	VL4611N	INDOORS
BPS253T	2500	NO	VL4611N	OUTDOORS
BPS25ITG	2500	YES	VL3611G6	INDOORS
BPS253TG	2500	YES	VL3611G6	OUTDOORS
BPS30IT	3000	NO	VL4612N	INDOORS
BPS303T	3000	NO	VL4612N	OUTDOORS
BPS30ITG	3000	YES	VL3612G6	INDOORS
BPS303TG	3000	YES	VL3612G6	OUTDOORS
BPS40IT	4000	NO	SL4613N	INDOORS
BPS403T	4000	NO	SL4613N	OUTDOORS
BPS40ITG	4000	YES	SL3613G6	INDOORS
BPS403TG	4000	YES	SL3613G6	OUTDOORS

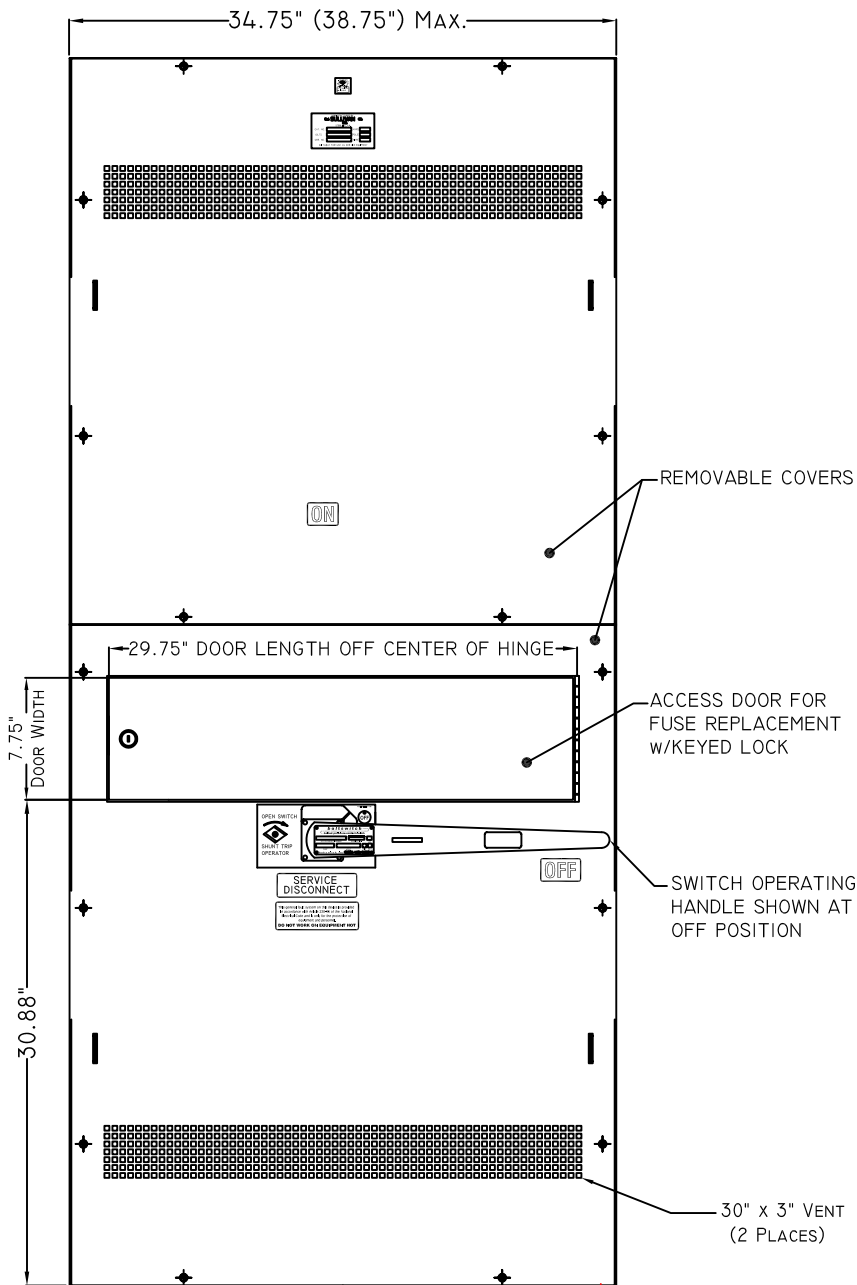
This chart represents the most common models, equipped with 3 poles and 4 wires. There are many other models available, please contact us for configurations not shown here. Other options include the addition of a shunt trip operator, key interlock provisions, motorized manual operator or motorized shunt trip operator. For Boltswitch specifications, visit <http://www.boltswitch.com/products.html> and select either O-1022 or O-1025 in the Outline Drawings pull down section.

DWG. TITLE:	BOLTSWITCH Series VL & SL 800 - 4000 Amp Rated
DWG. NO:	Top Feed Boltswitch Notes & Order Info
MATERIAL:	12 Ga. ASTM A653 Galvannealed - G60-U
FINISH:	Powder Coated ANSI 61

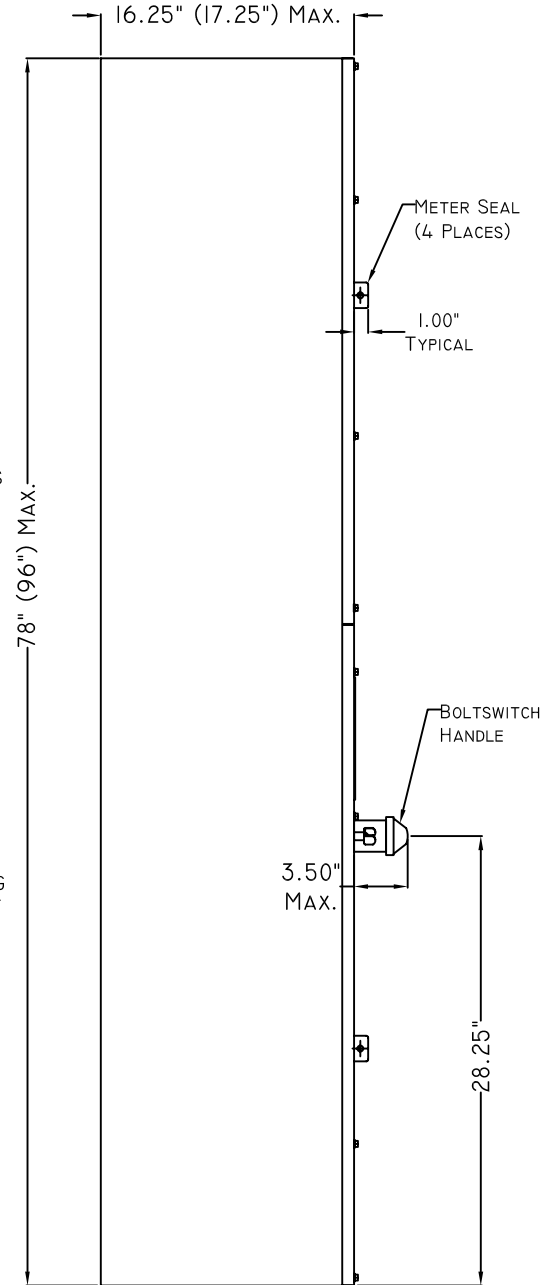
NOTICE: THIS INFORMATION IS THE PROPERTY OF N.J. SULLIVAN CO., ANY REPRODUCTION, PUBLICATION OR DISTRIBUTION TO A THIRD PARTY IS STRICTLY FORBIDDEN UNLESS WRITTEN PERMISSIONS ARE GIVEN BY AN AUTHORIZED AGENT OF: N.J. SULLIVAN CO., INC.	
DFTG.:	CD DATE: 10/07/10
CHKR.:	DATE:
REV.:	DATE:
REV.:	DATE:
REV.:	DATE:



N.J. SULLIVAN Co.
INCORPORATED
P.O. BOX 438, STERLING, VIRGINIA 20167
METAL FABRICATION
Phone: (703)-464-5944 Fax: (703)-464-5992
www.njsullivan.com



FRONT VIEW



SIDE VIEW

Top Feed Bolted Pressure Switch
800-4000 Amps
(4000 Amp Dimensions in Parenthesis)

NEMA Type 1
 Shown

DWG. TITLE: Top Feed Bolted Pressure Switch
 800-4000 Amps

DWG. NO.: Top Feed Boltswitch Enclosure

MATERIAL: 12 Ga. ASTM A653 Galvannealed - G60-U

FINISH: Powder Coated ANSI 61

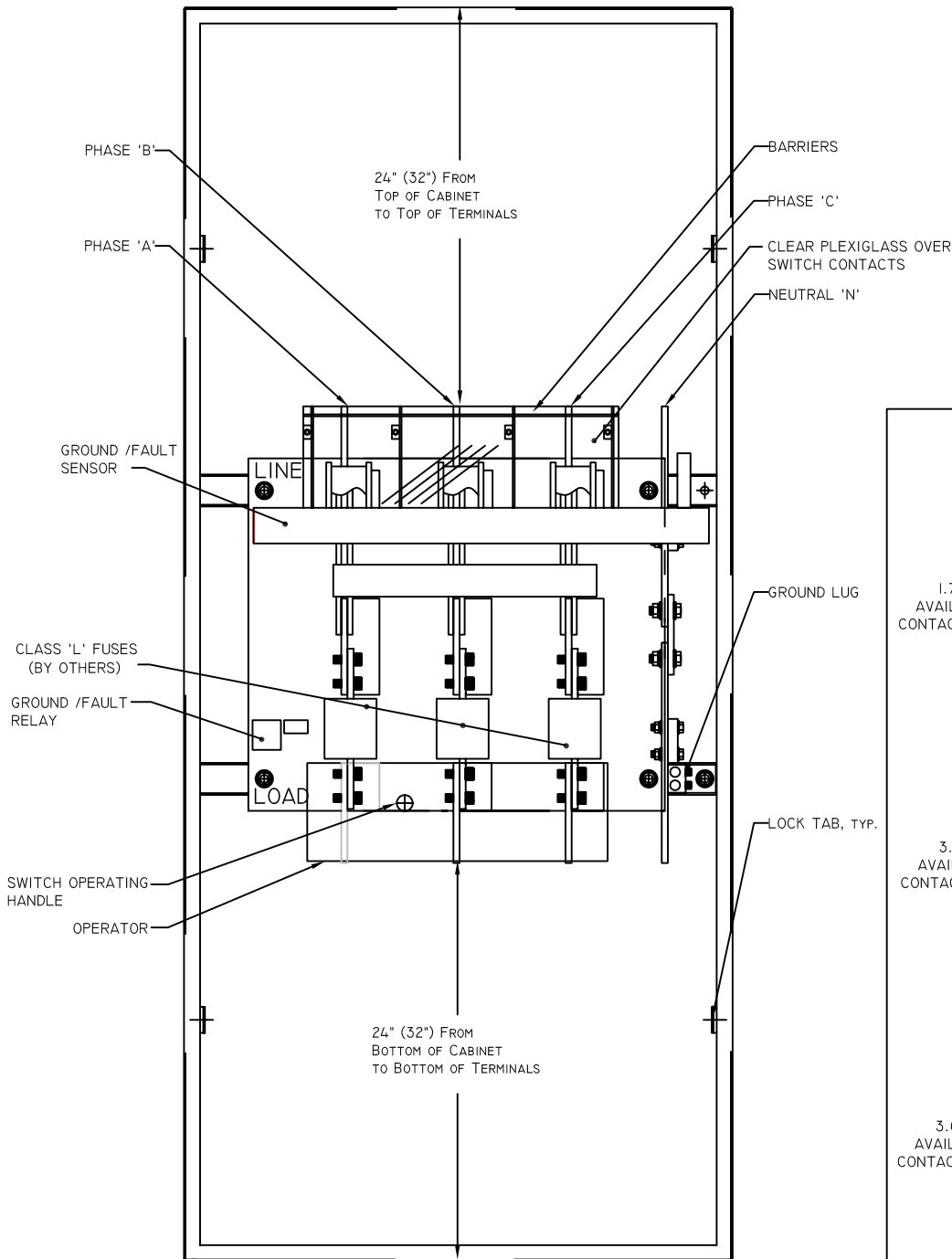
NOTICE:
 THIS INFORMATION IS THE PROPERTY OF N.J.
 SULLIVAN CO., ANY REPRODUCTION, PUBLICATION
 OR DISTRIBUTION TO A THIRD PARTY IS STRICTLY
 FORBIDDEN UNLESS WRITTEN PERMISSIONS ARE
 GIVEN BY AN AUTHORIZED AGENT OF:
 N.J. SULLIVAN CO., INC.

DFTG.:	cd	DATE:	10/07/10
CHKR.:		DATE:	
REV.:		DATE:	
REV.:		DATE:	
REV.:		DATE:	



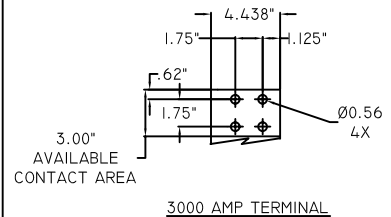
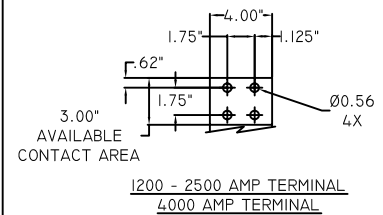
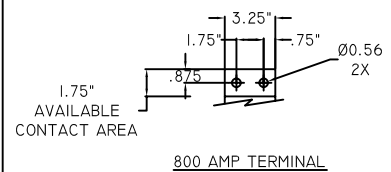
P.O. BOX 438, STERLING, VIRGINIA 20167
 METAL FABRICATION
 Phone: (703)-464-5944 Fax: (703)-464-5992
 www.njsullivan.com

Top Feed Bolted Pressure Switch Details



Dimensions shown are for
800-3000 Amps
(4000 Amp Dimensions
shown in Parenthesis)

Terminal Layouts



DWG. TITLE: Top Feed Bolted Pressure Switch
800-4000 Amps

DWG. NO.: Top Feed Boltswitch

MATERIAL: 12 Ga. ASTM A653 Galvannealed - G60-U

FINISH: Powder Coated ANSI 61

NOTICE:
THIS INFORMATION IS THE PROPERTY OF N.J. SULLIVAN CO., ANY REPRODUCTION, PUBLICATION OR DISTRIBUTION TO A THIRD PARTY IS STRICTLY FORBIDDEN UNLESS WRITTEN PERMISSIONS ARE GIVEN BY AN AUTHORIZED AGENT OF:
N.J. SULLIVAN CO., INC.

DFTG.:	CD	DATE:	10/07/10
CHKR.:		DATE:	
REV.:		DATE:	
REV.:		DATE:	
REV.:		DATE:	

N.J.
SULLIVAN Co.
INCORPORATED

P.O. BOX 438, STERLING, VIRGINIA 20167
METAL FABRICATION
Phone: (703)-464-5944 Fax: (703)-464-5992
www.njsullivan.com