

NOTES FOR BOTTOM FEED BOLTSWITCHES:

- 1. Applications:** Particularly recommended for use in service entrance switch gear, and/or where there may be high available fault current. All Boltswitches are designed to use class 'L' fuses (fuses are not supplied).
- 2. Features:** 200,000 ampere fault current ratings; bolted pressure contacts; load break design; quick-make / quick-break operators; visible contacts; silver plated copper current carrying parts; grid type arc chutes; interpole barriers; terminals designed for lugs or busbars; provisions for up to four padlocks.
- 3. All 800 - 4000 Ampere Switches:** Have been tested in accordance with UL-977 and are UL listed as 'fused power circuit devices' under file number E44498.
- 4. Series VLB & SLB:** For the following; Shunt Trip Operator, add suffix '-ST' to the end of part number, same applies to; Motorized Manual Operator, add suffix '-MM' ; Motorized Shunt Trip Operator, add suffix '-MST'. (Example: VLB4412N-ST)
- 5. Cabinet Design:** Cabinets are designed to meet the requirements of Underwriters Laboratories, (UL) #50 and #508. Canadian Standards Association C22.2 No. 94 and the National Electrical Manufacturers Association (NEMA) Type 1, Indoor Use, (Enclosures intended for indoor use, primarily to provide a degree of protection against contact with the enclosed equipment or locations where unusual service conditions do not exist); and NEMA Type 3, Outdoor Use, (Enclosures intended for outdoor use, primarily to provide protection against windblown dust, rain and sleet, and undamaged by the formation of ice on the enclosure).
- 6. Cabinet Layout:** Cabinets can be custom furnished with any type of cutout / knockout that may be required; i.e. trough, wireways, conduit etc. per customers request.

PART NUMBER	AMPERAGE RATING	INTEGRAL GROUND FAULT PROTECTION	BOLTSWITCH PART NUMBER	INDOORS / OUTDOORS
BPS81B	800	NO	VLB447N	INDOORS
BPS83B	800	NO	VLB447N	OUTDOORS
BPS121B	1200	NO	VLB448N	INDOORS
BPS123B	1200	NO	VLB448N	OUTDOORS
BPS121BG	1200	YES	VLB348G6	INDOORS
BPS123BG	1200	YES	VLB348G6	OUTDOORS
BPS161B	1600	NO	VLB449N	INDOORS
BPS163B	1600	NO	VLB449N	OUTDOORS
BPS161BG	1600	YES	VLB349G6	INDOORS
BPS163BG	1600	YES	VLB349G6	OUTDOORS
BPS201B	2000	NO	VLB4410N	INDOORS
BPS203B	2000	NO	VLB4410N	OUTDOORS
BPS201BG	2000	YES	VLB3410G6	INDOORS
BPS203BG	2000	YES	VLB3410G6	OUTDOORS
BPS251B	2500	NO	VLB4411N	INDOORS
BPS253B	2500	NO	VLB4411N	OUTDOORS
BPS251BG	2500	YES	VLB3411G6	INDOORS
BPS253BG	2500	YES	VLB3411G6	OUTDOORS
BPS301B	3000	NO	VLB4412N	INDOORS
BPS303B	3000	NO	VLB4412N	OUTDOORS
BPS301BG	3000	YES	VLB3412G6	INDOORS
BPS303BG	3000	YES	VLB3412G6	OUTDOORS
BPS401B	4000	NO	SLB4413N	INDOORS
BPS403B	4000	NO	SLB4413N	OUTDOORS
BPS401BG	4000	YES	SLB3413G6	INDOORS
BPS403BG	4000	YES	SLB3413G6	OUTDOORS

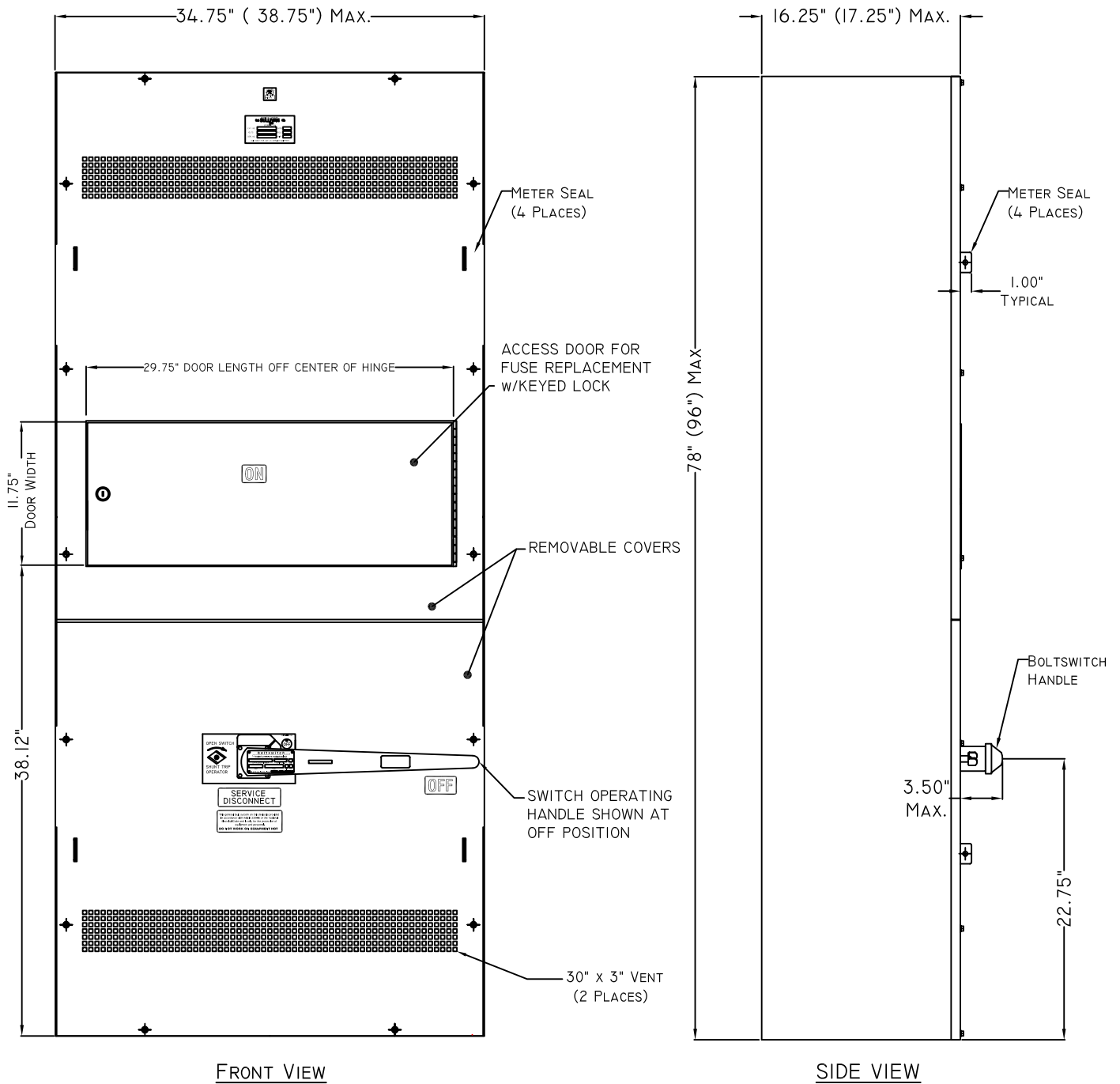
This chart represents the most common models, equipped with 3 poles and 4 wires. There are many other models available, please contact us for configurations not shown here. Other options include the addition of a shunt trip operator, key interlock provisions, motorized manual operator or motorized shunt trip operator. For Boltswitch specifications, visit <http://www.boltswitch.com/products.html> and select either O-1103 or O-1116 in the Outline Drawings pull down section.

DWG. TITLE:	BOLTSWITCH Series VLB & SLB 800 - 4000 Amp Rated
DWG. NO:	Bottom Feed Boltswitch Notes & Order Info
MATERIAL:	12 Ga. ASTM A653 Galvannealed - G60U
FINISH:	Powder Coated ANSI 61

NOTICE: THIS INFORMATION IS THE PROPERTY OF N.J. SULLIVAN CO., ANY REPRODUCTION, PUBLICATION OR DISTRIBUTION TO A THIRD PARTY IS STRICTLY FORBIDDEN UNLESS WRITTEN PERMISSIONS ARE GIVEN BY AN AUTHORIZED AGENT OF: N.J. SULLIVAN CO., INC.	
DFTG.:	CD DATE: 10/07/10
CHKR.:	DATE:
REV.:	DATE:
REV.:	DATE:
REV.:	DATE:



N.J. SULLIVAN Co.
INCORPORATED
P.O. BOX 438, STERLING, VIRGINIA 20167
METAL FABRICATION
Phone: (703)-464-5944 Fax: (703)-464-5992
www.njsullivan.com



NEMA Type 1
Shown

**Bottom Feed Bolted Pressure Switch
800-4000 Amps
(4000 Amp Dimensions in Parenthesis)**

DWG. TITLE: Bottom Feed Bolted Pressure Switch
800-4000 Amps

DWG. NO.: Bottom Feed Boltswitch Enclosure

MATERIAL: 12 Ga. ASTM A653 Galvannealed - G60-U

FINISH: Powder Coated ANSI 61

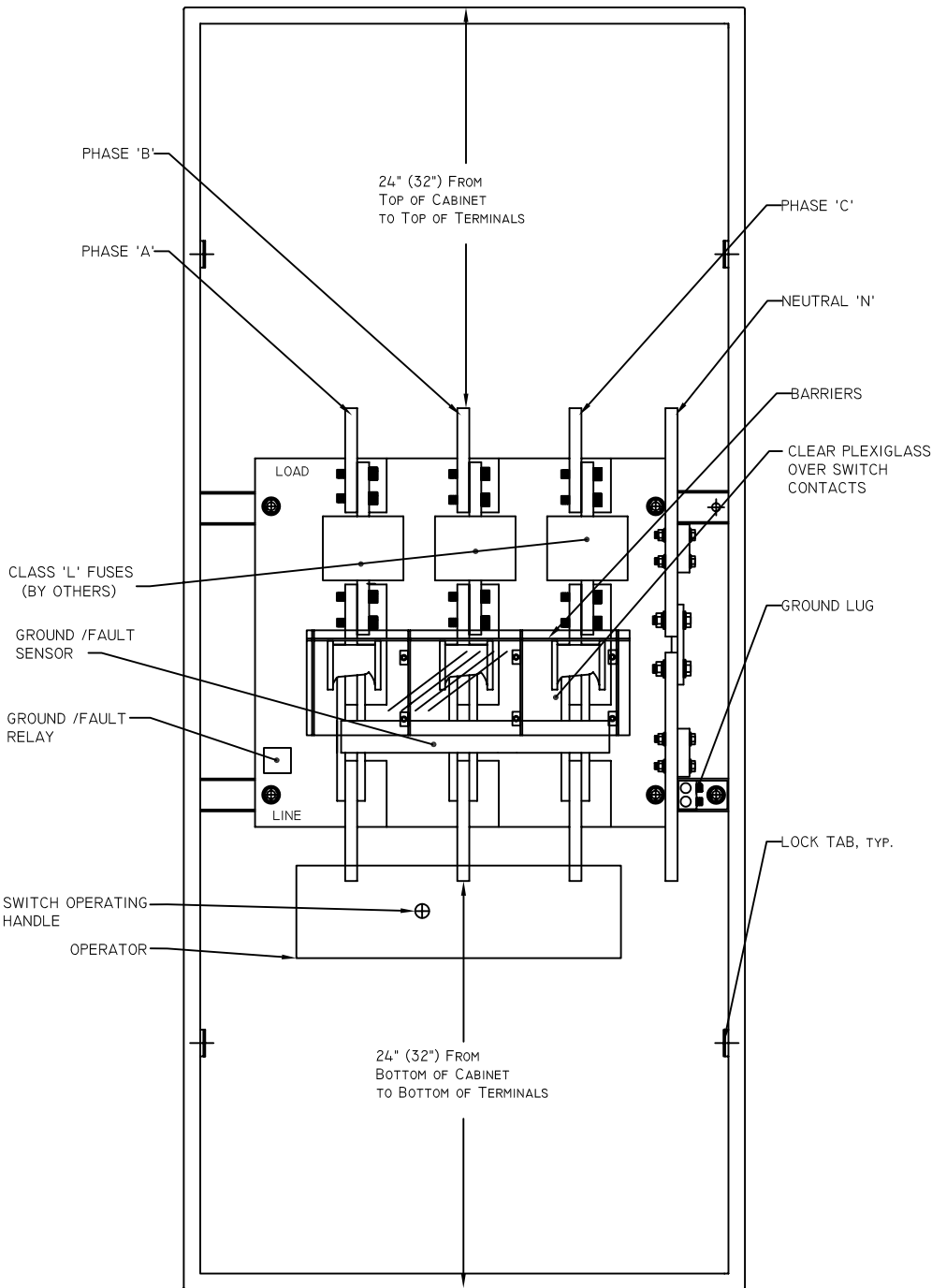
NOTICE:
THIS INFORMATION IS THE PROPERTY OF N.J. SULLIVAN CO., ANY REPRODUCTION, PUBLICATION OR DISTRIBUTION TO A THIRD PARTY IS STRICTLY FORBIDDEN UNLESS WRITTEN PERMISSIONS ARE GIVEN BY AN AUTHORIZED AGENT OF:
N.J. SULLIVAN CO., INC.

DFTG.:	CD	DATE:	10/07/10
CHKR.:		DATE:	
REV.:		DATE:	
REV.:		DATE:	
REV.:		DATE:	



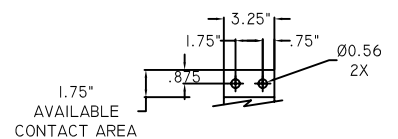
INCORPORATED
P.O. BOX 438, STERLING, VIRGINIA 20167
METAL FABRICATION
Phone: (703)-464-5944 Fax: (703)-464-5992
www.njsullivan.com

Bottom Feed Bolted Pressure Switch Details

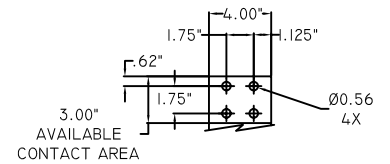


Dimensions shown are for
800-3000 Amps
(4000 Amp Dimensions
shown in Parenthesis)

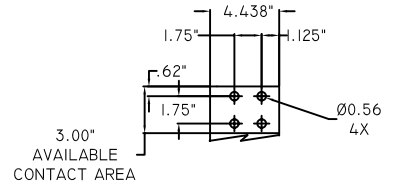
Terminal Layouts



800 AMP TERMINAL



1200 - 2500 AMP TERMINAL
4000 AMP TERMINAL



3000 AMP TERMINAL

DWG. TITLE: **Bottom Feed Bolted Pressure Switch
800-4000 Amps**

DWG. NO.: **Bottom Feed Boltswitch**

MATERIAL: **12 Ga. ASTM A653 Galvannealed - G60-U**

FINISH: **Powder Coated ANSI 61**

NOTICE:
THIS INFORMATION IS THE PROPERTY OF N.J. SULLIVAN CO.. ANY REPRODUCTION, PUBLICATION OR DISTRIBUTION TO A THIRD PARTY IS STRICTLY FORBIDDEN UNLESS WRITTEN PERMISSIONS ARE GIVEN BY AN AUTHORIZED AGENT OF:
N.J. SULLIVAN CO., INC.

DFTG.:	CD	DATE:	10/07/10
CHKR.:		DATE:	
REV.:		DATE:	
REV.:		DATE:	
REV.:		DATE:	



P.O. BOX 438, STERLING, VIRGINIA 20167
METAL FABRICATION
Phone: (703)-464-5944 Fax: (703)-464-5992
www.njsullivan.com